



# Companion Construction





# Our Mission



To build great buildings & provide an exceptional construction experience

## Est. 1984

Companion Construction has been working to serve our communities and customers by providing exceptional customer service. As our name suggests, we strive to work in partnership with others to achieve success on every project.



# Who We Are

Companion Construction is a team of professionals who are committed to excellence.

Like any great team, each team member has a role and plays their part to ensure the success of the whole.

**A TEAM of CONSTRUCTION PROFESSIONALS COMMITTED to EXCELLENCE**

## We Value

COLLABORATION

HONESTY

RELATIONSHIPS



**Daniel Burslem**

President



**Gary Janzen**

Senior Project Manager



**Aron Koehn**

Project Manager



**Luke Alexander**

Project Coordinator



**Eric Meyers**

Site Superintendant



**Nicole Kelly**

Administration and Accounting

# What We Do



Companion Construction uses a team based strategy to understand the clients requirements and works in partnership with architects, consultants and trades to achieve the project goals.

We work for institutions, businesses, charitable organizations, governments and developers to build mass timber structures, steel buildings, conventional commercial buildings, and tenant improvements.

Companion also performs major and minor renovations to existing commercial buildings such as seismic improvements, building envelope renovations, and interior renovations.





# What We Do

- Institutional
- Mass Timber
- Tenant Improvements
- Healthcare
- Steel Buildings
- Interior Renovations
- Seismic Improvements
- Building Envelope

General Contractors | Construction Management | Project Management | Design Build





# Fast + Epp

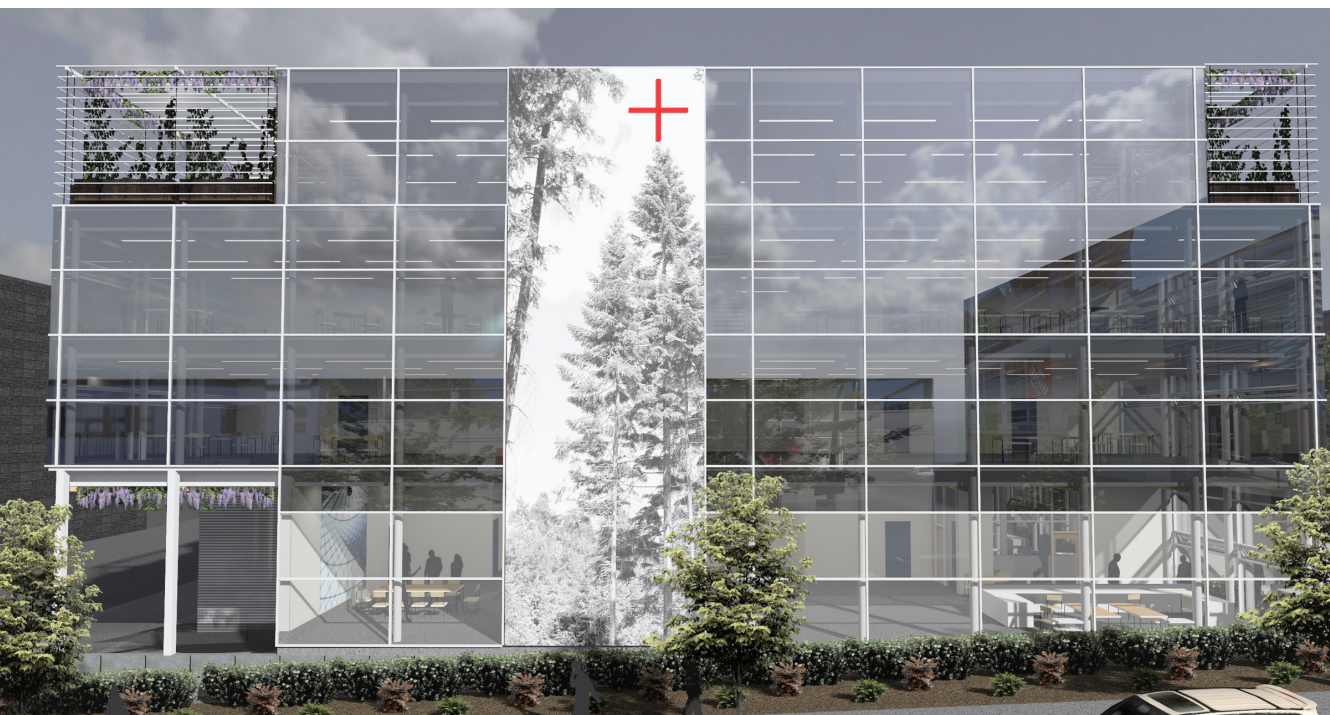


**Project Budget: 8 Million**

**Project Schedule: 18 Months**

**Building Size: 16,000 sq ft.**

In 2021, Companion completed a 16,000sqft mass timber CLT new head office space for Fast + Epp Structural Engineers. The hybrid mass timber, concrete and steel structured building uses new technology in building element design, smart glazing and advanced building control systems to produce a highly efficient and elegant space. A design approach that uses structural elements in their true form as architectural features exemplifies the unique nature of Fast + Epp as a global leader in mass timber design. In consultation with interior design architects, Companion has installed high spec finishes that compliment the unique structural elements such as the soaring interconnected floor space atrium, glass enclosed board room, meeting rooms and private offices and custom millwork. Stairwells constructed of mass timber wall/floor panels with custom fabricated steel and concrete stair units along with a custom perforated guard wall tie all floors together in a bespoke space that offers a great alternative to taking the elevator.









# Riverside



# Community Church

**Project Budget: \$12.5 M**

**Project Schedule: 20 Months**

**Building Size: 54,000 sqft**

In 2018, Companion completed the construction of a new 54,000 ft<sup>2</sup> building for Riverside Church in Port Coquitlam. The new building houses a large 1200 seat sanctuary, full gymnasium, a large commercial kitchen, a beautifully finished atrium as well as administration and classroom spaces. Working with the church building committee, we completed a high-spec modern architectural finish to the interior spaces and exterior facades. The stunning curved feature wall and expansive wood-finish metal soffits around the main building entrance welcome occupants into the main 2 storey atrium space that, in itself, provides a beautiful meeting space for several hundred people. The large sanctuary was designed and built as a performing arts space with a theatrical stage complete with technology to support large scale events and an orchestra pit with a hydraulically lifted stage to lower players into a performance space or raise to extend the main stage area.







Throughout the building are other modern and easily maintainable finishes including the high polish densified concrete floors, architectural steel components and a grand staircase linking the atrium space to upper floor areas. Built on the edge of a large commercial warehouse development area, Riverside Church stands out and contrasts with its high architectural design. Companion is very proud of the work of its personnel and trades to achieve the grand vision of the designers and church community and to leave this lasting mark on the landscape of the area.



# Richmond Christian High School Campus



**Project Budget: \$8M**

**Project Schedule: 16 Months**

**Building Size: 35,000 sq ft**

In 2008 Companion completed a new 35,000 ft<sup>2</sup> mass timber-wood frame building for Richmond Christian School. From the installation of all of the glue-laminated timber and dimensional wood framing to architectural wood finishes and exterior cladding elements, we self performed a good part of the work to complete the building. Companion worked with the consultant team to assist in the design of energy efficient building systems that paired well with the overt architectural design that intently took advantage of passive heating and cooling. The building itself houses academic & specialty classrooms, a beautiful atrium space, student flex spaces, a large school library and a full double gymnasium. The atrium area takes full advantage of natural light through its full length skylight & glass overhead door which opens to an exterior gathering space. The striking timber soffit above the main entrance welcomes staff, students and visitors directly into the atrium area at the center of the building.





# Richmond Christian Annex

**Project Budget: \$2 M**

**Project Schedule: 12 Months**

**Building Size: 8,000 sq ft**

Companion also completed a smaller annex to the high school in 2013. This 8,000 ft<sup>2</sup> building was completed on a design/build basis and the aesthetic mimics the nature and intent of the larger high school building. The stand-alone structure houses a variety of classrooms which support the use of the larger school building. Again, for the annex building, Companion self performed much of the structural, exterior and interior finish work.



# Surrey Christian School



**Project Budget:**

**Project Schedule:**

**Building Size: 15,000 sq ft**

In 2014, Companion worked with Surrey Christian School to construct a new primary facility on the existing middle school property creating a campus of 2 buildings that would work in tandem to serve the needs of the elementary school family. The new 15,000 ft<sup>2</sup> mass timber building sits atop a full in-ground/grade parking structure, the building itself containing 15 classrooms connected by a beautiful naturally lit atrium space & an additional 5000 ft<sup>2</sup> rooftop deck for outdoor learning. Outdoor play & landscaped classroom assembly areas were constructed around the building & next to the forested creek that runs the south & east sides of the property, to complete the entirety of the project. Companion worked closely with designers & the Surrey Christian School's building committee to collaboratively produce a facility that echoes sustainability & functionality at its core.







Working with one of the leading local manufacturers of mass timber assemblies, Companion oversaw the off-site construction of custom-building components that were erected in only a few weeks on the site to form the structure of the complete building. Companion, self-performed all the concrete foundation work, dimensional lumber framing, exterior hardie siding finish, architectural & hard landscape concrete surfaces & interior finishes to complete the project. Winning the 2015 Fraser Valley Real Estate Board's Top Building in Surrey, the Surrey Christian School is a shining example of what we achieve through hard work, dedication to our clients & the pursuit of excellence in construction.



# Willingdon Church



**Project Budget:**

**Project Schedule:**

**Building Size: 54,000 sq ft**

In 2009, Companion Construction was contracted to complete Construction Management services for the expansion & renovation of Willingdon Church in central Burnaby. The growing needs of the congregation required the expansion of the existing north wing. A 3-storey extension with an underground parking level that was built to the maximum size of the lower parking area was constructed to the east of the existing building. Adding more than 60 new parking spaces, 15,000 ft<sup>2</sup> of classroom/assembly space & an extension of the 2-storey atrium, the new building was intently designed & constructed to match the old façade that it replaced. New classrooms, a large café area complete with a commercial food service facility & a new administration office area comprised most of the new space. A elevator created additional vertical movement throughout the building & a new grand entrance was constructed to lead from the parking area into the expanded 2 story soaring atrium space with its high vaulted ceilings.





In addition to the new extension, Companion also worked with the church's building committee and ministry user groups to design, redevelop and renovate most of the remainder of the 130,000 ft<sup>2</sup> physical plant. The gym was redeveloped into a flex space with use for an assembly venue complete with audio/visual/lighting installations, a large banquet facility and the existing gymnasium use. Emptied office wing areas were renovated to provide new library/resource center and other support spaces. The atrium transformed by adding digital wayfinding/information technology, flooring, paint, and new millwork finish engineered teak wall surfaces. New children's ministry, youth centers & nursery facilities were developed from former plain classroom spaces. Willingdon Church sees thousands of people through its doors every week & providing a long-lasting useable facility was top priority. Keeping in mind the requirements of stewardship and resource management, we succeeded in providing a cost-effective and beautifully functional building through this challenging project.



# Previous Projects



FRASER RIVER  
PILE & DREDGE



CASCADIA METALS



COLUMBIA  
SPORTSWEAR COMPANY



FAST + EPP



WILLINGDON CHURCH



PINEGROVE PLACE



VANCOUVER  
COASTAL HEALTH



NEW WESTMINSTER  
CITY DENTIST



CALVARY  
WORSHIP CENTRE



GREEN LINE HOSE  
& FITTINGS



RIVERSIDE  
COMMUNITY CHURCH



# Companion Construction



C2 3889 Keith Street  
Burnaby BC V5J 5K4  
v604-398-8233

✉ [info@companionconstruction.com](mailto:info@companionconstruction.com)